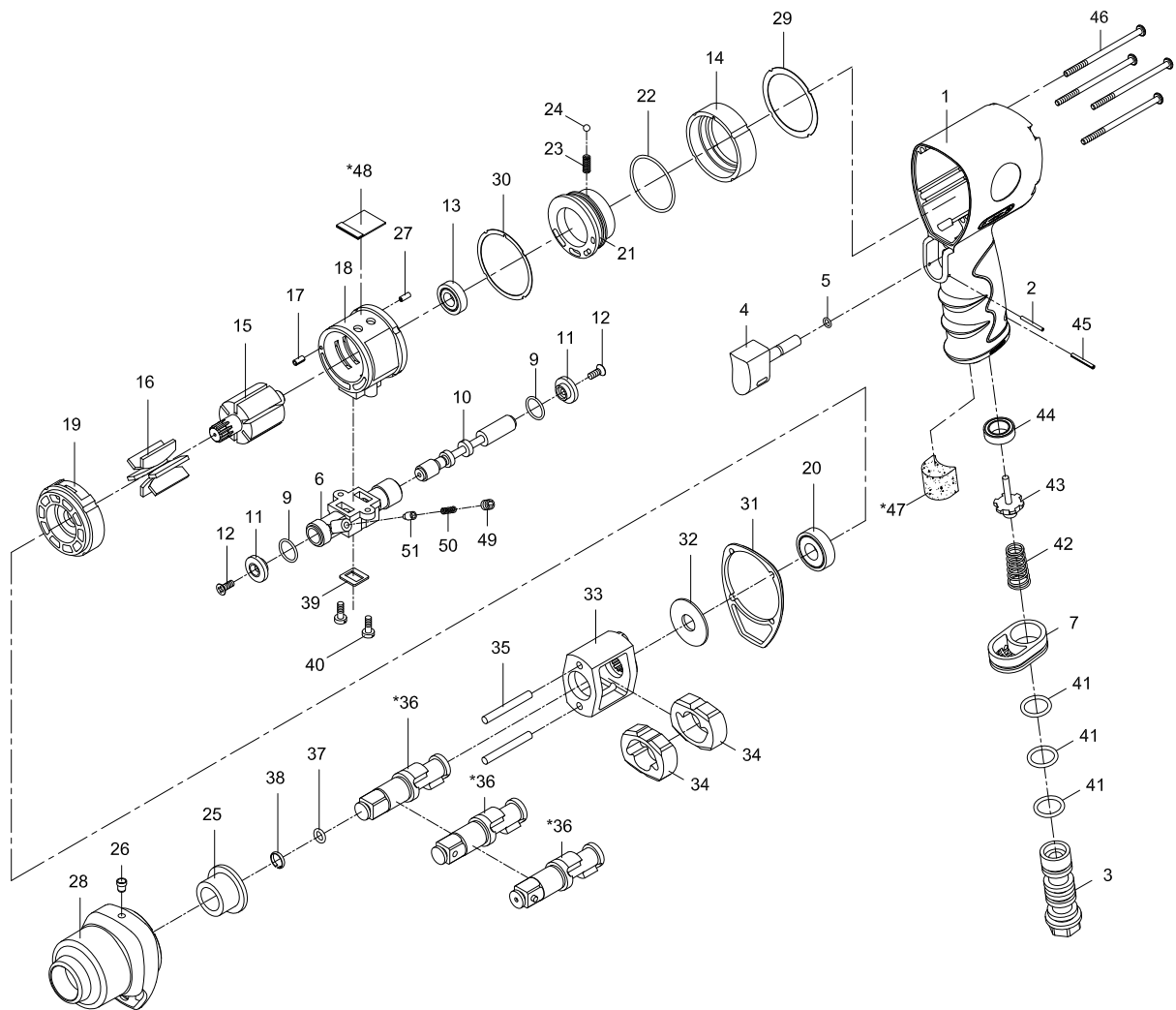


1/2" PROFESSIONAL IMPACT WRENCH



Index No.	Parts No.	Description	Index No.	Parts No.	Description
1	41-4012P01	Motor Housing	28	41-401228	Hammer Case
2	62054	Spring Pin (2x20)	29	41-401234	Gasket
3	43-401203	Air Inlet	30	41-401236	Gasket
4	43-403204	Trigger	31	41-401235	Gasket
5	OR00400100	O-Ring (4x1)	32	41-401227	Washer
6	41-401206-11	Reverse Valve	33	41-401208	Hammer Cage
7	41-401207	Exhaust Diffuser	34	41-401211	Hammer (2)
9	OR01104103	O-Ring (2) (11.4x1.25)	35	41-401217	Hammer Pin (2)
10	41-401210	Reverse Stem		43-401202-11	Anvil (R-Type 1/2")
11	41-401229	Button (2)	*36	43-401202-12	Anvil (RH-Type 1/2")
12	61035	Screw (2) (M3x8)		43-401202-13	Anvil (M-Type 1/2")
13	051838	Ball Bearing (6900zz)	37	40305	O-Ring (6.5x2)
14	41-401249	Fixed Ring	38	40303	Retaining Ring
15	41-401215	Rotor	39	41-401237	Gasket
16	41-401216	Rotor Blade (6)	40	41-401250	Screw (2)
17	70117-13	Spring Pin (2.5x5)	41	OR01505206	O-Ring (3) (15.54x2.62)
18	41-401218	Cylinder	42	43-403147	Valve Spring
19	41-401219	Front End Plate	43	43-403148	Valve Stem
20	060313	Ball Bearing (6001zz)	44	43-403145	Rubber Spacer
21	41-401220	Air Regulator	45	70102	Spring Pin (2.5x20)
22	OR03407108	O-Ring (34.65x1.78)	46	41-401230	Screw (4) (M4x75)
23	43-403323	Spring	*47	41-401253	Muffer Material
24	5K-3011B25	Steel Ball (9/64")	*48	43-401251	Muffer Material
25	41-401225	Anvil Bushing	49	41-401243	Set Screw (M4x6)
26	41-401254	Oil Cap (1/8")	50	41-401241-12	Spring
27	30117-22	Spring Pin (1.5x4)	51	41-401242-12	Pin

* Optional Parts

43-4012P-0001