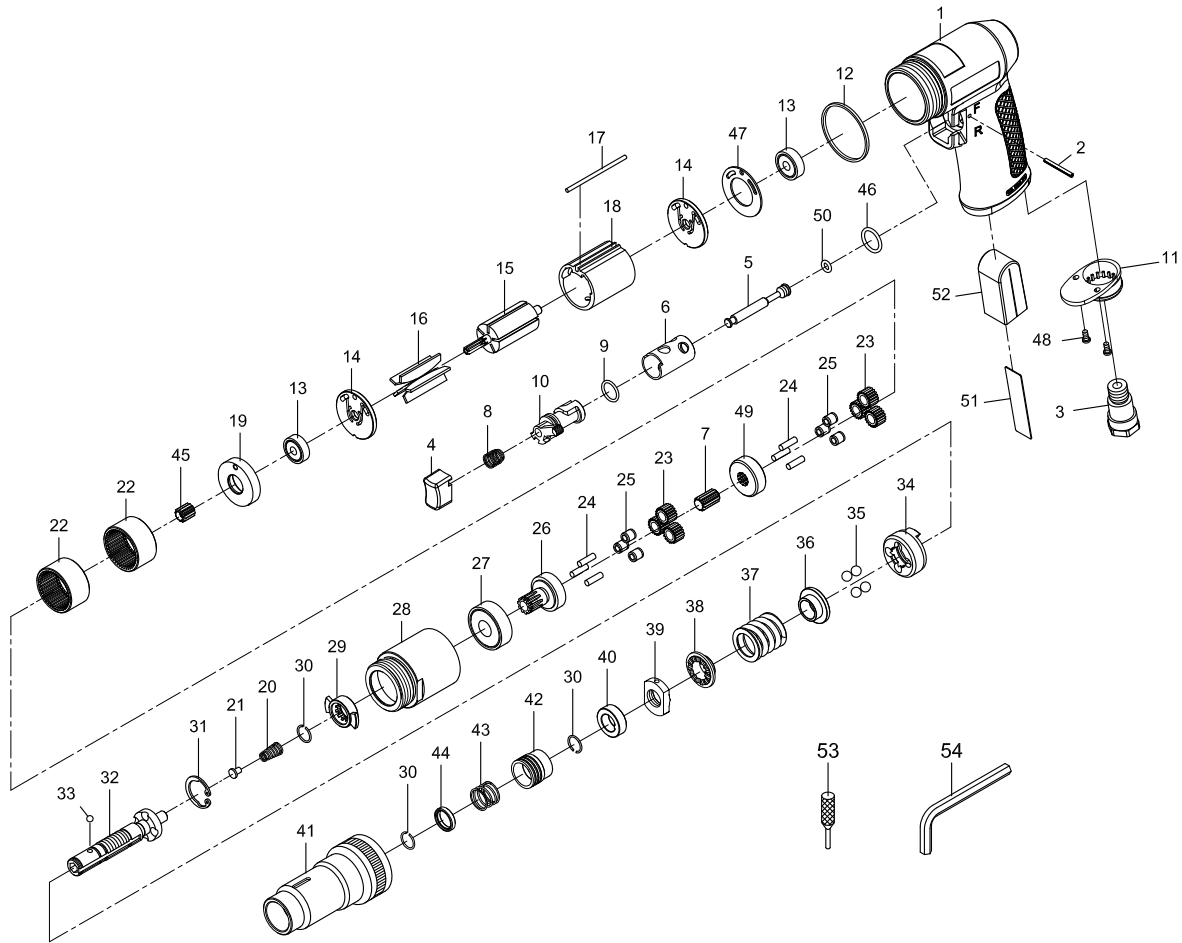


# 1/4" AIR SCREWDRIVER-EXTERNAL ADJUSTABLE CLUTCH



Index No.	Parts No.	Description	Index No.	Parts No.	Description
1	75-750001	Motor Housing	28	80328	Clamp Nut
2	80202	Spring Pin (Ø2.5x24L)	29	80229	Drive Clutch
3	75-725303	Air Inlet	30	80230	Retaining Ring (3)
4	795804	Trigger	31	80231	Snap Ring (RTW-21)
5	80205-12	Valve Stem	32	80232	Cam Spindle
6	80206	Reverse Bushing	33	40145	Steel Ball (1/8")
7	70421	Center Gear	34	80234	Clutch
8	75-730008	Valve Spring	35	80235	Steel Ball (4) (1/4")
9	80209	O-Ring (Ø12xØ1.6)	36	80236	Thrust Washer
10	80210	Reverse Lever	37	802F37-12	Spring
11	70110	Exhaust Diffuser	38	80238	Washer
12	75-725351	Decoration Ring	39	802F39	Adjust Nut
13	030113	Ball Bearing (2) (626ZZ)	40	80240	Spacer
14	80214	End Plate (2)	41	802F41	Clutch Housing
15	80215	Rotor	42	80242	Ball Retainer
16	80216	Rotor Blades (5)	43	80243	Spring
17	80217-13	Pin	44	80244	Washer
18	80218-22	Cylinder	45	70420	Pinion Gear
19	80219	Front End Plate	46	80247	O-Ring (Ø13.8xØ2)
20	80220	Spring	47	80211	Motor Gasket
21	80221	Spring Guide	48	40309	Screw (2) (TS2.9)
22	80222	Internal Gear (2)	49	70427	Reduction Spindle
23	70423	Planet Gear (6)	50	70107	O-Ring (Ø4.8xØ1.9)
24	30124	Pin (6) (Ø4x13.8L)	51	75-750007	Iron Sheet
25	70425	Bushing (6)	52	75-750020	Damping Material
26	80326	Work Spindle	53	600324	Key
27	080227	Ball Bearing (6201Z)	54	10022	Hex.Wrench (1/4")

83-7500F-0001

11.19.2014