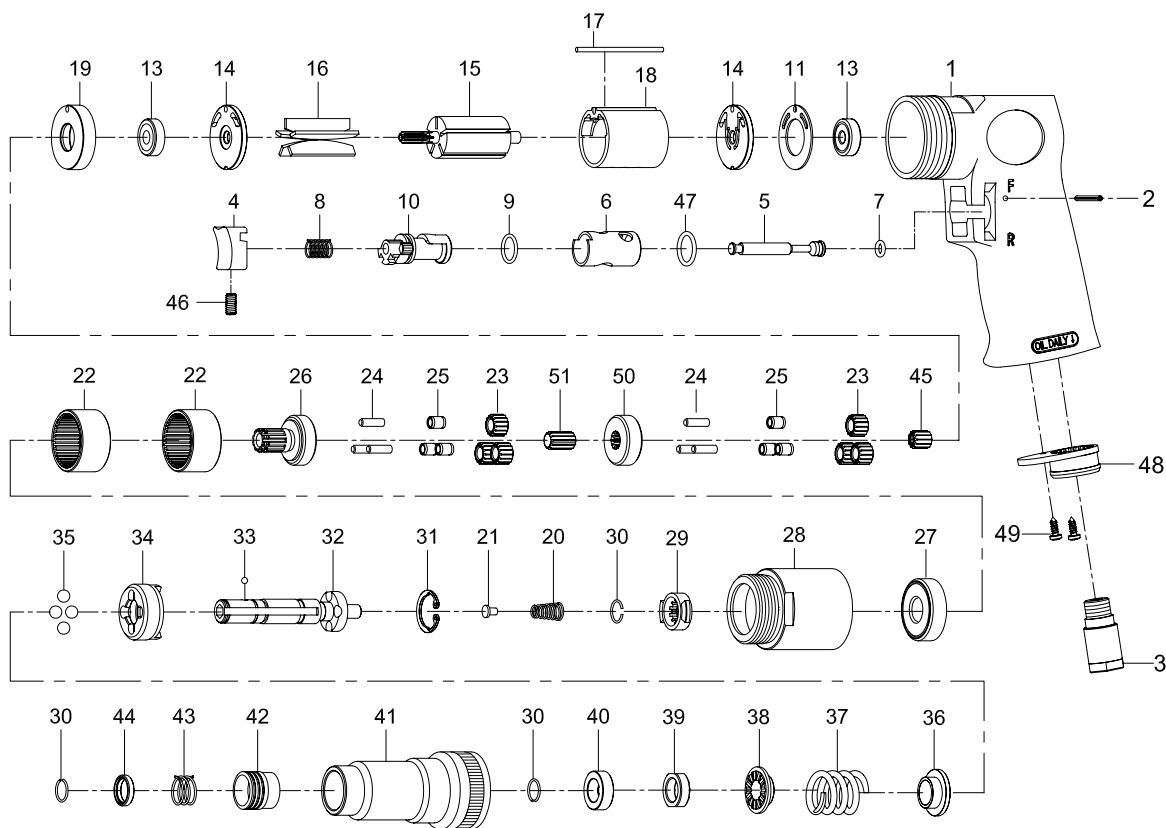


1/4" AIR SCREWDRIVER ADJUSTABLE CLUTCH



Index No.	Parts No.	Description	Index No.	Parts No.	Description
1	80201	Motor Housing	27	080227	Ball Bearing (6201Z)
2	80202	Spring Pin ($\varnothing 2.5 \times 24L$)	28	80328	Clamp Nut
3	70103	Air Inlet	29	80229	Drive Clutch
4	70104	Trigger	30	80230	Retaining Ring (3)
5	80205	Valve Stem	31	80231	Snap Ring (RTW-21)
6	80206	Reverse Bushing	32	80232	Cam Spindle
7	70107	O-Ring ($\varnothing 4.8 \times \varnothing 1.9$)	33	40145	Steel Ball (1/8")
8	70108	Valve Spring	34	80234	Clutch
9	80209	O-Ring ($\varnothing 12 \times \varnothing 1.6$)	35	80235	Steel Ball (4) (1/4")
10	80210	Reverse Lever	36	80236	Thrust Washer
11	80211	Motor Gasket	37	80237	Spring
13	030113	Ball Bearing (2) (626ZZ)	38	80238	Washer
14	80214	End Plate (2)	39	80239	Adjust Nut
15	80215	Rotor	40	80240	Spacer
16	80216	Rotor Blades (5)	41	80241	Clutch Housing
17	80217-13	Spring Pin ($\varnothing 2.5 \times 55L$)	42	80242	Ball Retainer
18	80218-22	Cylinder	43	80243	Spring
19	80219	Spacer	44	80244	Washer
20	80220	Spring	45	70420	Pinion Gear
21	80221	Spring Guide	46	70935	Set Screw (M4*8L)
22	80222	Internal Gear (2)	47	80247	O-Ring ($\varnothing 13.8 \times \varnothing 2$)
23	70423	Planet Gear (6)	48	70110	Exhaust Diffuser
24	30124	Pin (6) ($\varnothing 4 \times 13.8L$)	49	40309	Screw (2) (TS2.9)
25	70425	Bushing (6)	50	70427	Reduction Spindle
26	80326	Work Spindle	51	70421	Center Gear